

ST GILES HOUSE WEDDINGS



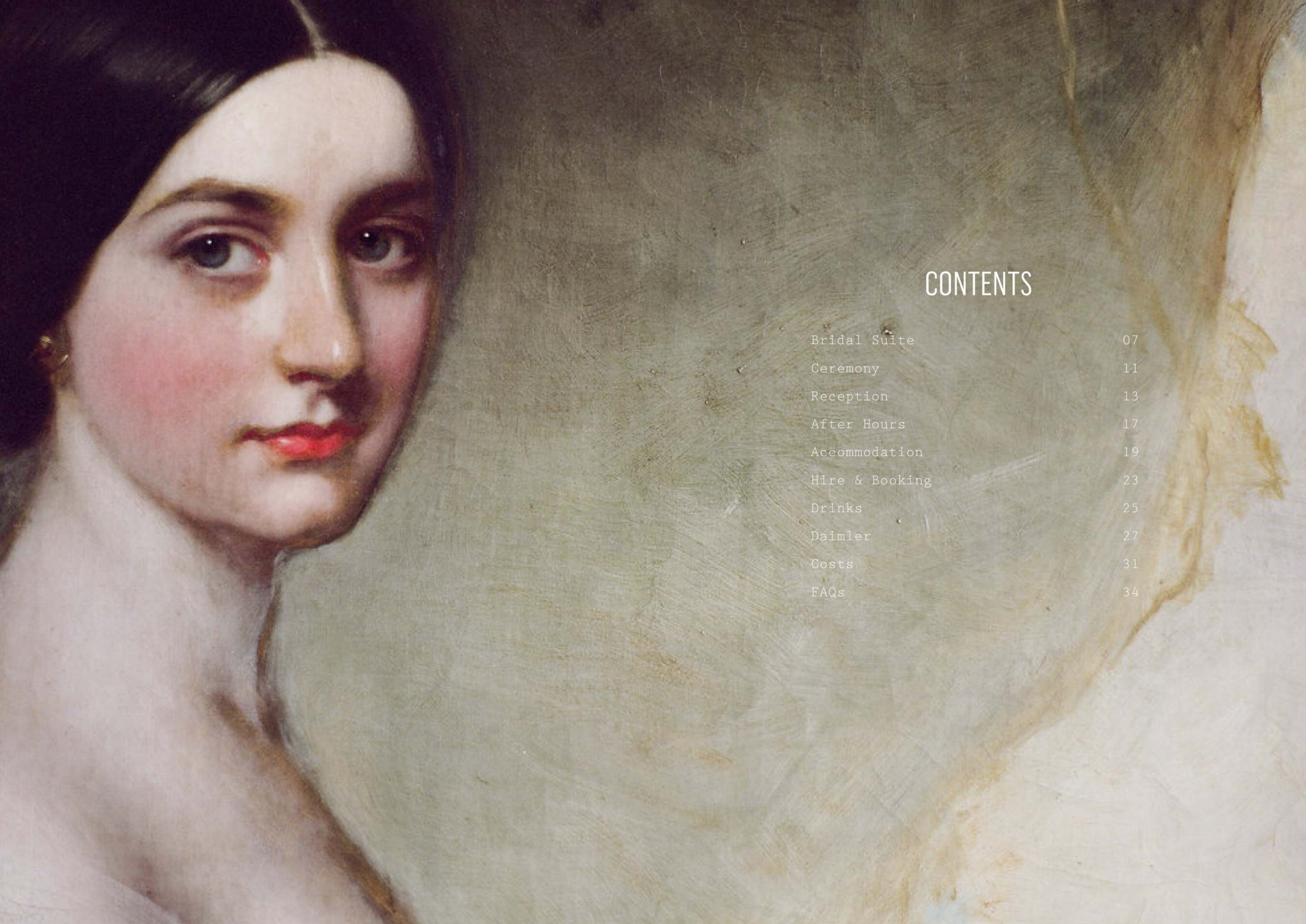
ST
GILES
HOUSE



WELCOME

St Giles House is an award-winning family home that has been lovingly restored for weddings and bespoke events. Every detail of your day has been carefully considered, from our elegant rooms and beautiful gardens, to the after-hours cellar nightclub and striking Riding House accommodation.

Let us take you on a journey you will never forget.



CONTENTS

Bridal Suite	07
Ceremony	11
Reception	13
After Hours	17
Accommodation	19
Hire & Booking	23
Drinks	25
Daimler	27
Costs	31
FAQs	34



BRIDAL SUITE

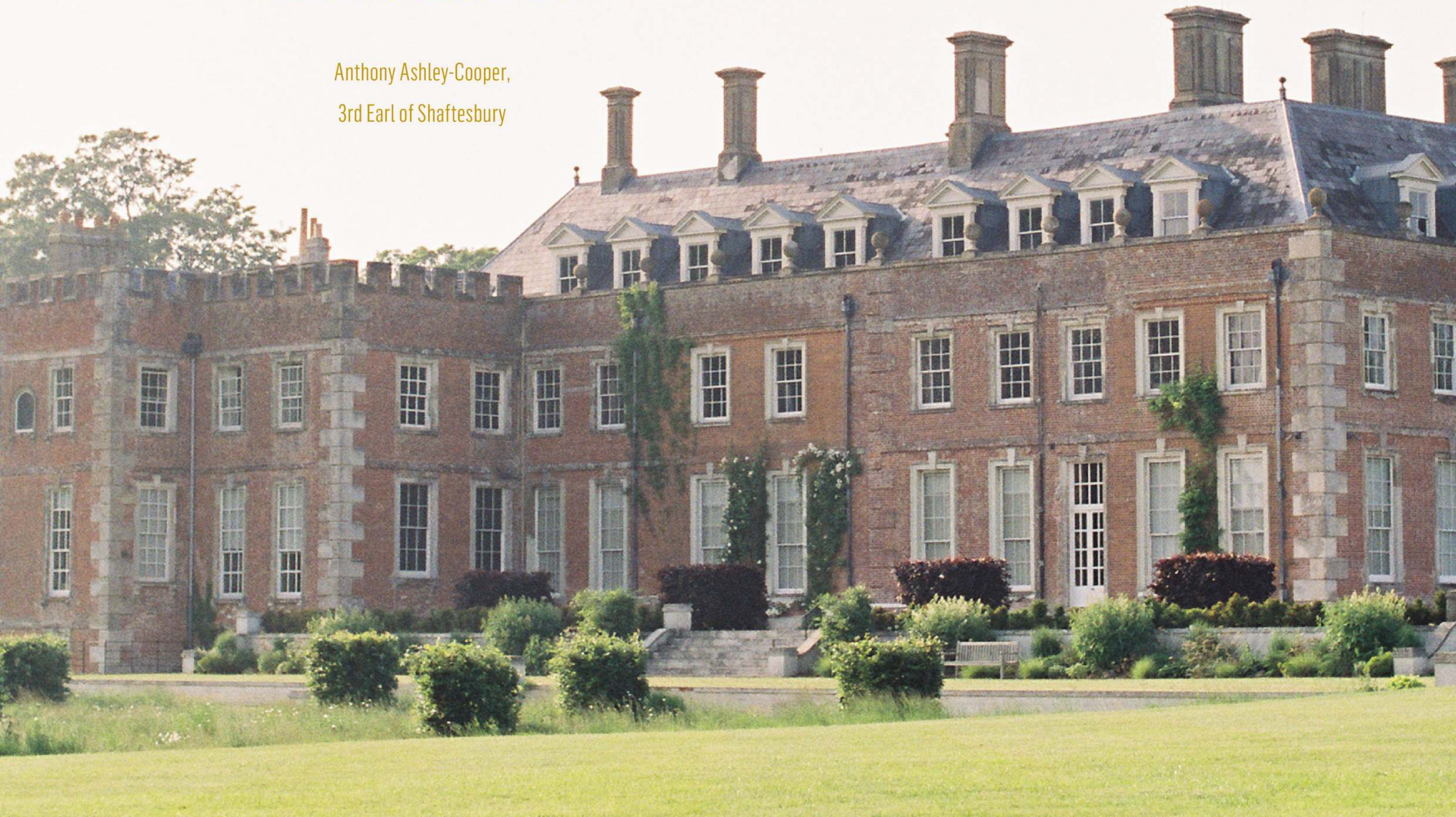
St Giles House provides the wedding party with a stylish, intimate suite in which to prepare for the day ahead.

Surround yourself with your nearest and dearest and relax with a glass of champagne, relishing those final moments before walking down the aisle to see the love of your life.



"THE MOST NATURAL BEAUTY IN THE WORLD IS HONESTY AND
MORAL TRUTH. FOR ALL BEAUTY IS TRUTH."

Anthony Ashley-Cooper,
3rd Earl of Shaftesbury



CEREMONY

St Giles House is licensed to hold civil ceremonies in any of the principle rooms in the house, for up to 120 guests. In the park, we have a beautiful 18th century Grotto adorned with shells brought back from the Caribbean, which provides a unique and intimate setting for a ceremony of up to 20 guests.

For larger gatherings a ceremony can be organised outside, and for a traditional Christian ceremony, St Giles Church is a 5 minute walk away.

Whatever location you choose our aim is to help you make it uniquely yours, and we love discussing new ideas to create the perfect ceremony for you.

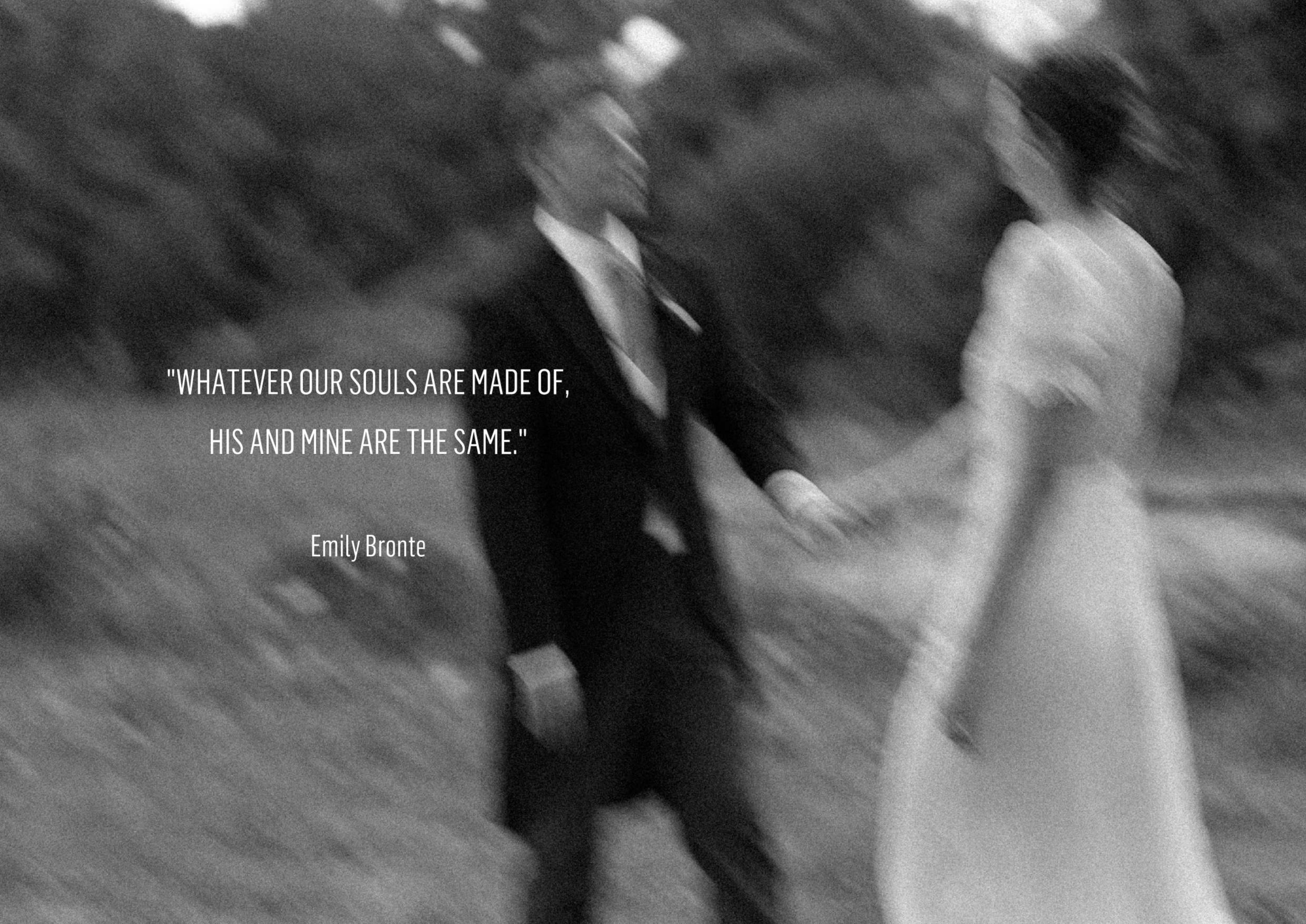




RECEPTION

Celebrate your first meal as a married couple with friends & family by candlelight in a stunning setting steeped in history. Surrounded by fireplaces and old master paintings you can choose from a variety of principal rooms that will make the moment truly magical.

Create a bespoke menu with one of our carefully chosen caterers, who will prepare delicious food to suit your requirements.

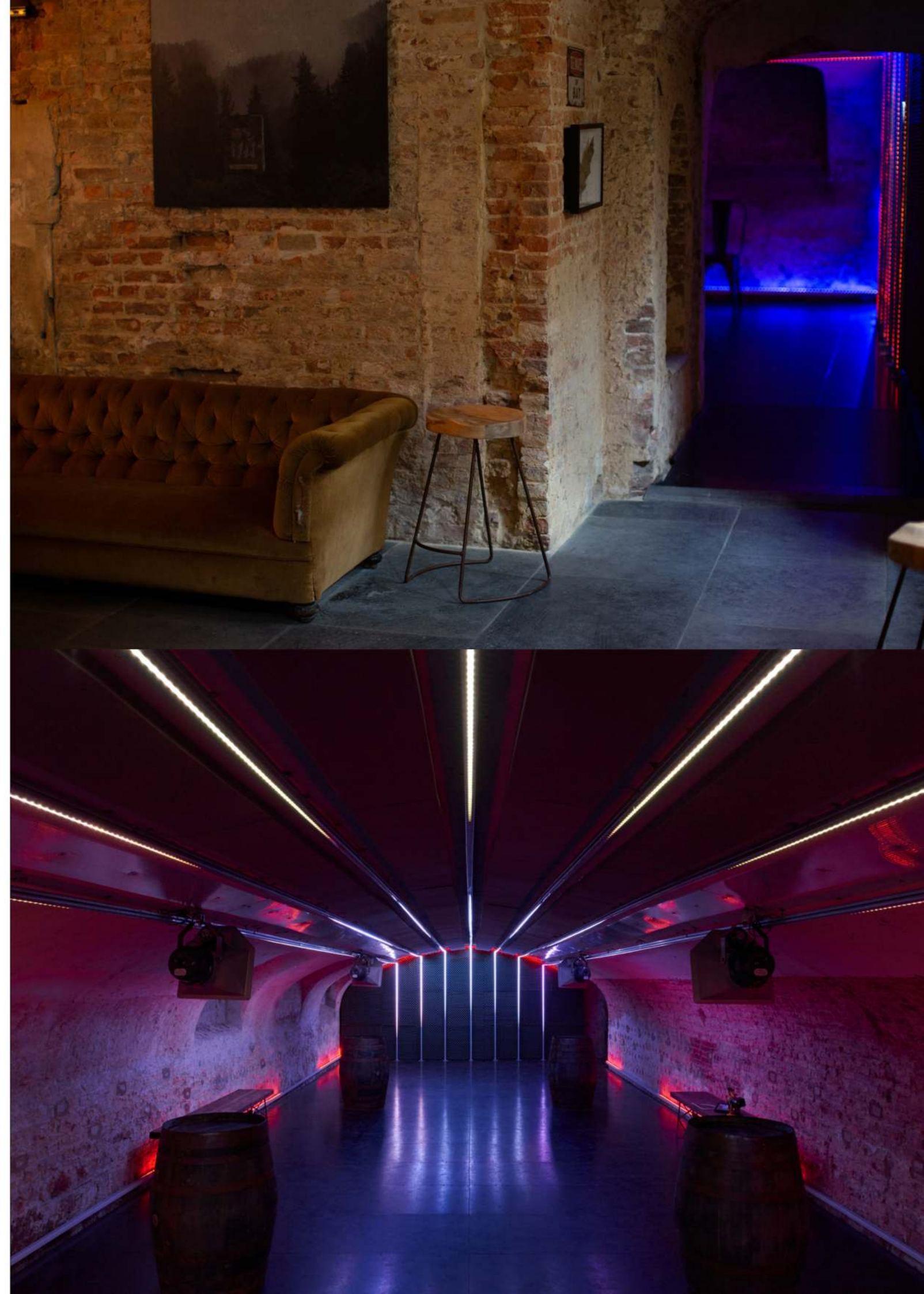
A black and white photograph of a couple in a romantic embrace. The woman is on the right, her hand resting on the man's chest. The man is on the left, looking towards the camera. The background is dark and out of focus, suggesting an outdoor setting at night or in a dimly lit room. The overall mood is intimate and romantic.

"WHATEVER OUR SOULS ARE MADE OF,
HIS AND MINE ARE THE SAME."

Emily Bronte

AFTER HOURS

Invite your guests to join you after the meal in our award-winning nightclub and bar. Designed with a state of the art light and sound system and with no neighbours to tell you to turn the music down; you are free to dance the night away to your favourite band or DJ. Late night extensions available on request.





ACCOMMODATION

Included in your hire is a two night stay in our 17th century Riding House, located within the grounds of St Giles House. The Riding House has seven double bedrooms and one larger accessible bedroom that sleeps four.

The rooms have been carefully converted into unique living spaces, all with luxurious bathrooms and a high attention to detail. The upstairs has an open lounge space and bar, perfect for relaxing with your nearest and dearest. Downstairs there is a large dining room for breakfast and dinners. The Riding House is available with catered or self-catered options.

To accompany the Riding House, our wedding package also includes a two night stay in our Grooms Cottages; Scullery and Tack Room, with four double bedrooms. There is the option to include our Pepperpot Lodges and, new in 2022, our six St Giles House bedrooms, which are available on request. Total accommodation can be provided for up to 42 guests.



HIRE & BOOKING

St Giles House hire is from 10am until midnight and includes exclusive use of the venue during this time. For an additional charge, the venue can stay open until 2am. For guests using the house, the Library, Drawing Rooms and Great Dining Room will close after dinner and guests will have use of the Tapestry Room, Bar and Nightclub in the basement.

Bookings will be confirmed upon receipt of a non-refundable deposit and dates will be held for a maximum of 2 weeks. Your hire includes a 2 night stay with breakfast in both the Riding House and Grooms Cottage.





"THE UNPATHED WATERS AND THE
UNDREAMED SHORES."

William Shakespeare

DRINKS

Choose from our curated selection of new and old world wines, with prices starting from £25 per head.

Alternatively, you may provide your own wine and bubbles for the ceremony and wedding meal (terms and conditions apply).

As the night progresses, our house bar is on hand serving an excellent selection of spirits, local craft ales and cocktails.

DAIMLER

Arrive to your wedding in style in the family DE36 Daimler. The car dates back to 1947 and was recently recovered from Malta in 2013. It was a Royal favourite before the Rolls Royce.

Originally acquired by the 9th Earl of Shaftesbury as a chauffeur driven car for official visits, The Daimler is still in remarkable condition and driving as well as ever.

The Daimler is available subject to availability and a an additional charge.





"THERE IS NO WAY TO HAPPINESS -
HAPPINESS IS THE WAY."

Thich Nhat Hanh



"I LOVE HER. AND
THAT'S THE BEGINNING
AND END OF
EVERYTHING."

F. Scott Fitzgerald

COSTS

	2023	2024
Thursday	£13,200	£14,760
Includes 2 nights accommodation for up to 26 guests		
Friday & Saturday	£18,000	£19,800
Includes 2 nights accommodation for up to 26 guests		



FAQS

Can I provisionally book a date?

We can hold a date for you for up to two weeks after your viewing.

How do I confirm a booking?

With a non-refundable deposit of £3000 along with a signed booking form agreeing to our terms and conditions.

How early can we have access to the venue?

The hire period starts from 10am, although access to the venue can sometimes be arranged from 9am if required. All preparations and deliveries can be arranged with your St Giles wedding coordinator.

Do we need to contact the Registrars?

As soon as you have decided on a date please ensure you check availability with the registrar. Payment for and booking of your ceremony can be made directly with the registrars.

T: 01305 225153

E: registrationinformation@dorsetcc.gov.uk

Is the venue wheelchair accessible?

We have a lift and a ramp (if required) for guests. With walking difficulties and / or wheelchairs that Provides access to all the rooms.

FAQS

What are the bar and music finish times?

The bar and music finish by 11.45pm, allowing guests time to leave the premises by midnight. Extensions up to 2am are available for an additional fee, subject to availability.

Do you supply a PA System?

Yes, we have a portable bluetooth speaker for your use during the day and a fully kitted nightclub for your party. The use of both can be discussed with your wedding coordinator.

Can we provide our own catering?

All food, with the exception of the wedding cake, is to be provided by one of our nominated caterers. If alternative caterers are required for ethnic or religious reasons, this can be arranged and an additional fee will apply.

Can we supply our own alcohol?

You are welcome to supply your own wine and bubbles for the daytime reception and wedding meal. Corkage charges will apply and are detailed in our wedding terms and conditions.

FAQS

Do you supply high chairs?

We have four highchairs available. If you require more, these are available from the caterers.

Do you have round tables or banqueting tables?

We are fortunate to be able to offer you both. Our round tables can seat up to 12 and both the round and long tables are 6ft.

Can we have fireworks?

With wildlife in mind, fireworks and sky lanterns are not permitted, although we do allow hand held sparklers.

Are candles and tealights allowed at the venue?

Candles and tealights can be used provided they are in fireproof containers. The positioning of these should be agreed with the venue.

Can we have additional evening guests?

Yes, St Giles can host a maximum of 200 total guests in the evening.

Is there a cash point on site?

No, however our tills are cashless. The nearest cash point is about 7 miles away.

FAQS

Can guests park overnight?

Yes, guests can park in the guest car park overnight. All cars should be moved by 11am the following morning.

Is there additional accommodation nearby?

The Riding House and Grooms Cottage are part of our wedding package, and accommodate up to 26 guests. For further accommodation, you can hire our Pepperpot Lodges (up to 4 guests), our Courtyard Flat (up to 2 guests) and, subject to availability, the St Giles House bedrooms (up to 12 guests). Home Farm House, All Hallows Farmhouse and Brook House are all located in the village and guests can book directly.

Is confetti permitted on site?

Confetti is not permitted on the premises although organic petals can be thrown outside.

Can we collect our belongings the next day?

Personal items should be gathered at the end of your event and taken with you. The house is closed on Sundays, but arrangements can be made to collect certain items on a Friday/Monday.

Any other questions?

Please email us weddings@stgilesdorset.com



St.Giles House
Wimborne St.Giles
Dorset
BH21 5NA

United Kingdom
+44 (0)1725 517214
weddings@stgilesdorset.com
stgilesdorset.com

ST
GILES
HOUSE